

Kohinoor Kaleido

CHANNEL PARTNER DECK



KOHINOOR KALIEDO PHASE 2: COME HOME TO A WORLD OF VIBRANT HUES

- **An array of premium 2 & 3 Bed Apartments**
- **Experience limitless joyful moments with 20+ lifestyle amenities**
- **Revel in the Urban Forest – where nature meets modernity**
- **Embrace a living experience inspired by the elements of nature**



Why Kaleido

01

Location Efficiency

02

Urban Forest Concept

03

Amenity Depth

04

Brand Delivery Record

LOCATION



Key Distance

Key Distances

SCHOOLS

Eon Gyanankur School - **12 Mins**
Euro School - **10 Mins**
Phoenix World School - **8 Mins**
Dhole Patil School for Excellence - **8 Mins**

EMPLOYMENT HUBS

Eon IT Park - **12 Mins**
World Trade Center - **14 Mins**
MIDC Knowledge Park - **10 Mins**
Zensar - **10 Mins**

HEALTHCARE

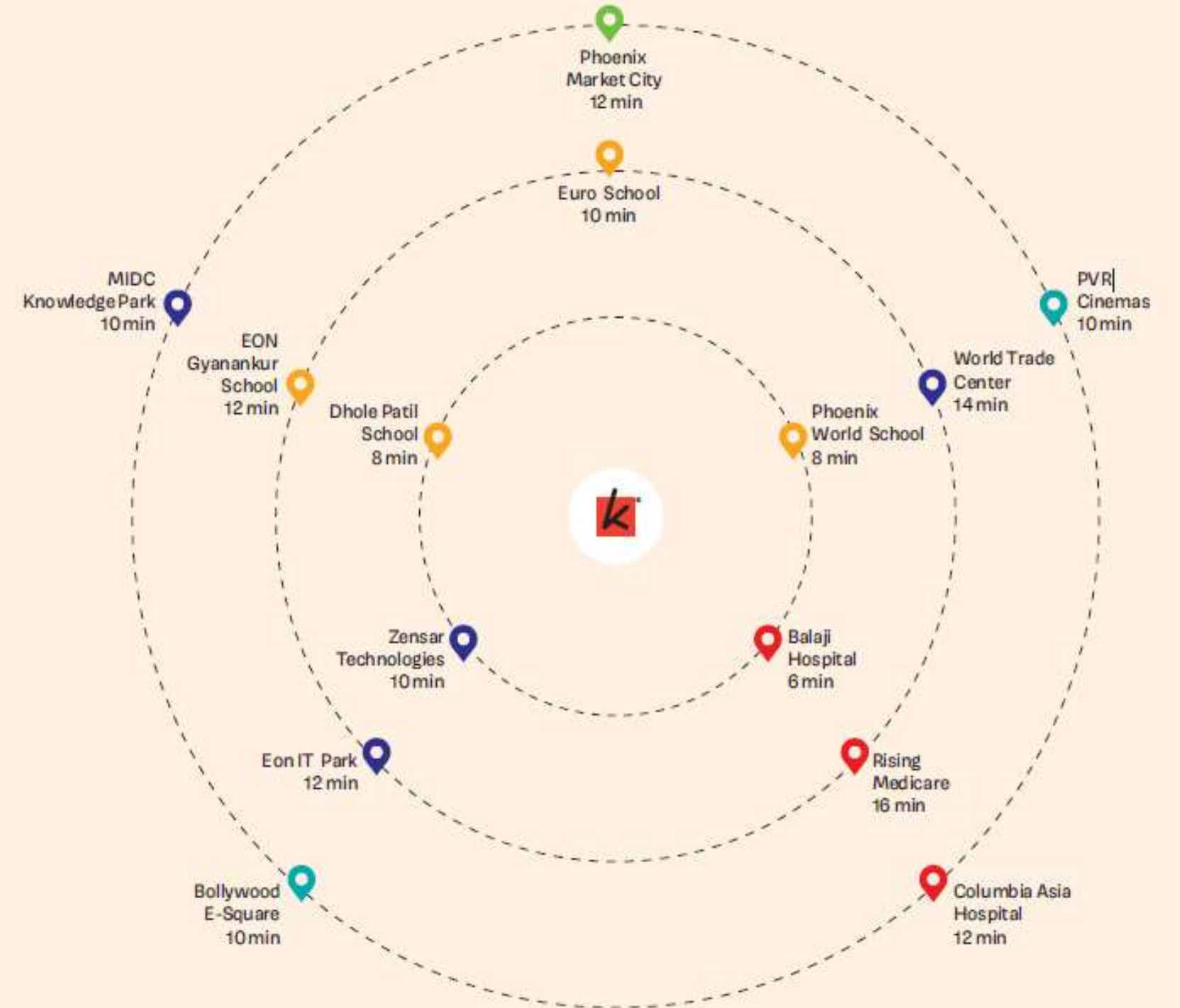
Columbia Asia Hospital - **12 Mins**
Rising Medicare - **12 Mins**
Balaji Hospital - **6 Mins**

ENTERTAINMENT

Bollywood E-Square - **10 Mins**
PVR Cinemas - **10 Mins**

MALLS

Phoenix Market City - **12 Mins**

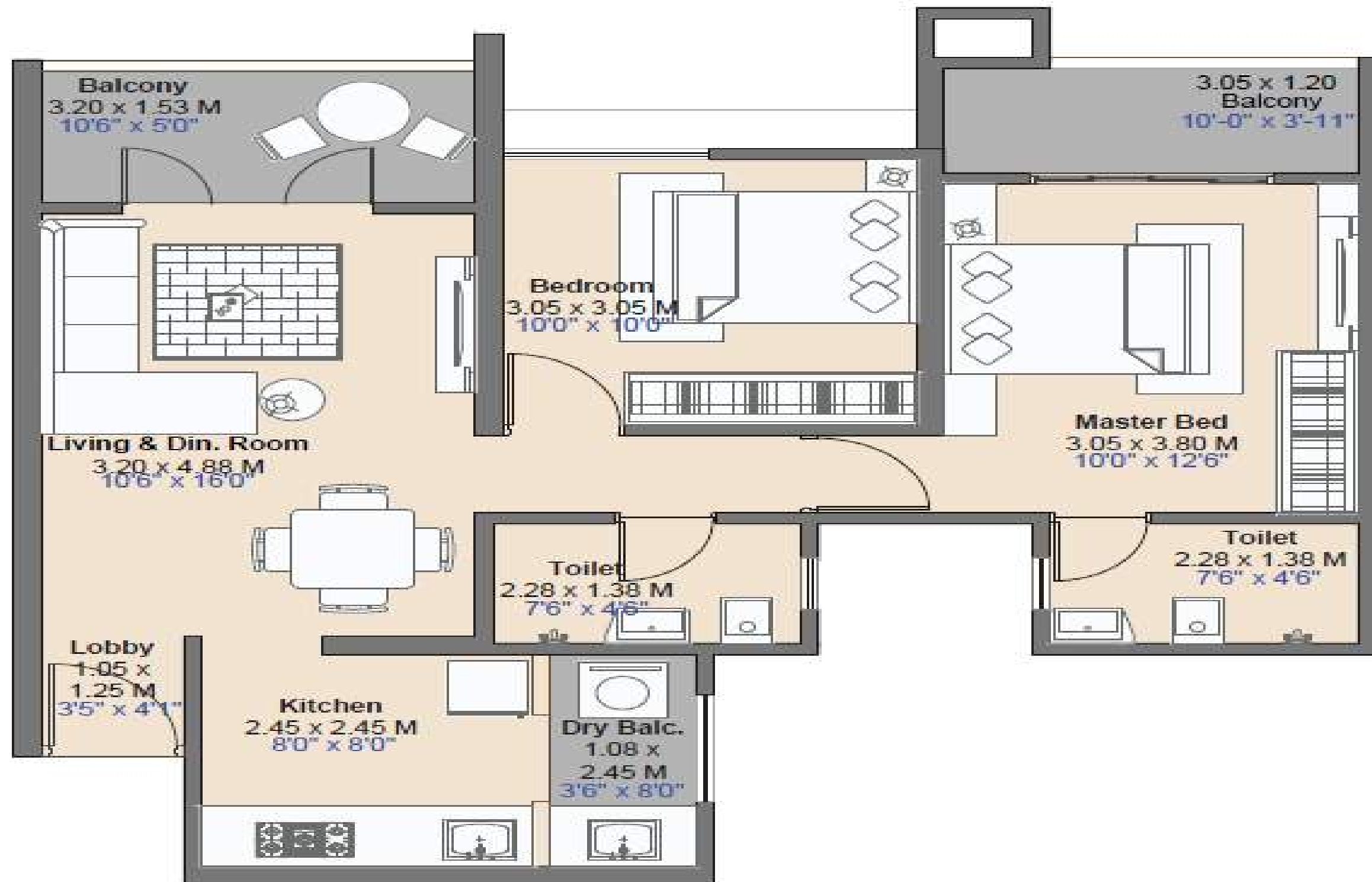


AMENITIES

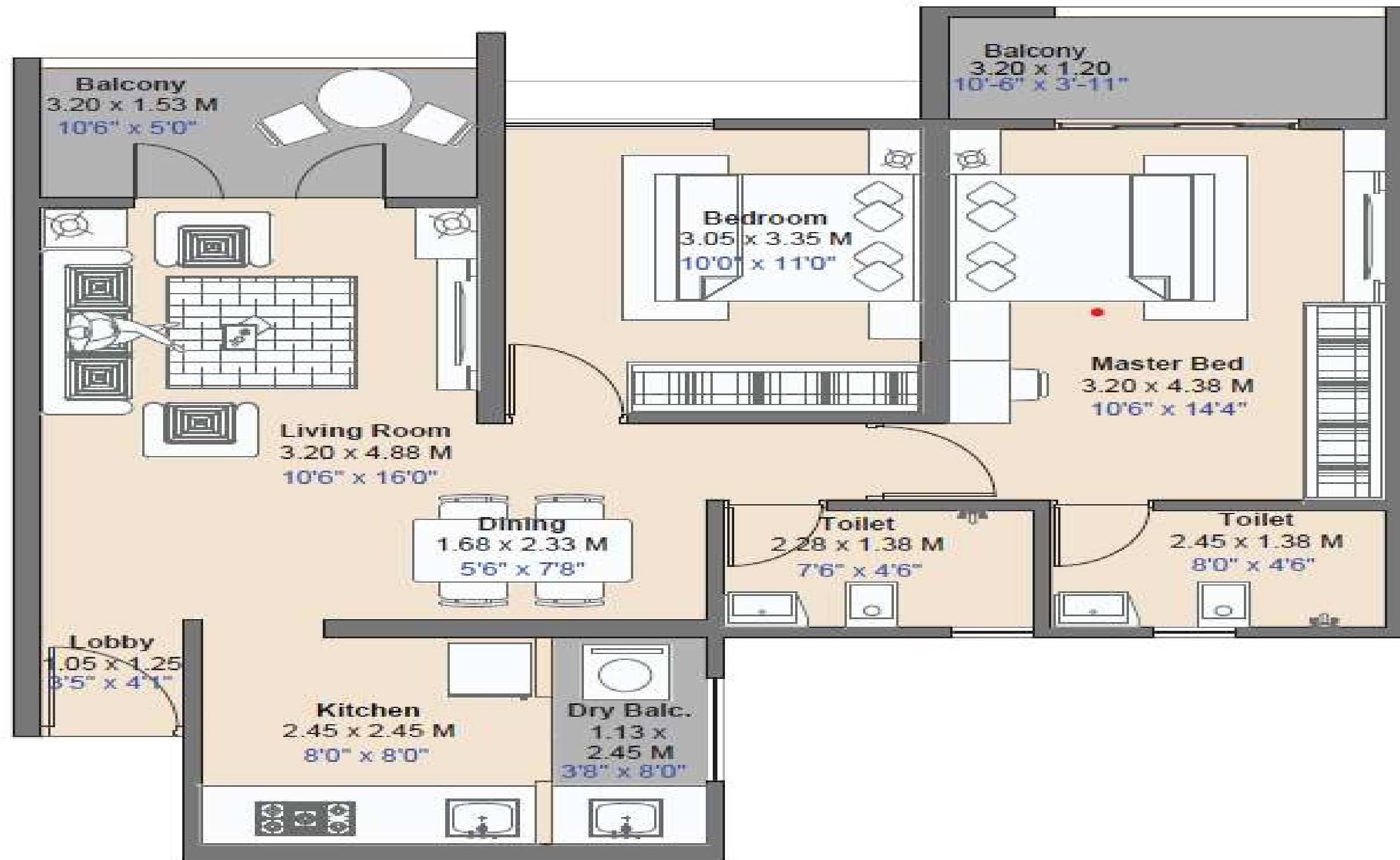
- Multipurpose Hall
- Indoor Games
- Clubhouse / Indoor Amenities
- Glamping / Yoga Area
- Eco pond
- Recreational Plaza
- Amphitheatre (Small & Big)
- Space For Farmers' Market
- Cove Seats
- Party Lawn
- Pool Deck
- Changing Rooms
- Entry Boulevard with Canopy Trees
- Traffic Island with Feature Tree / Sculpture
- Barbeque
- View Deck
- Outdoor Gymnasium
- Indoor Gymnasium
- Futsal / Box Cricket (Outdoor)
- Squash Courts (Indoor)
- Badminton Courts (Outdoor)
- Children's Sports Area
- Kids' Play Area
- Climbing Wall Zone
- Swimming Pool
- Kids' Pool
- Groves along the Driveway
- Open Greens / Sit-Outs / Play Areas
- Garden with Trees which Attracts Butterfly

MASTER LAYOUT PLAN

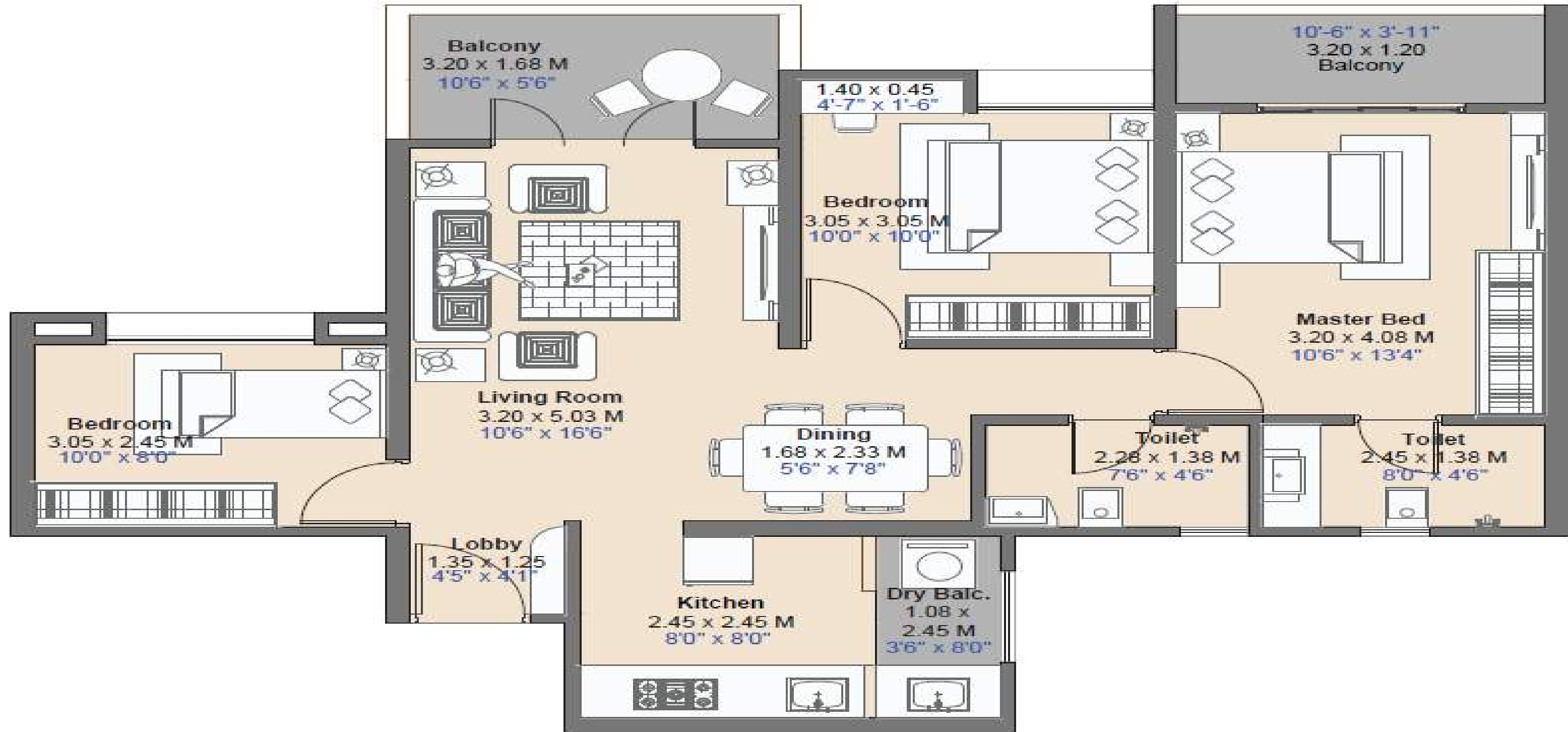




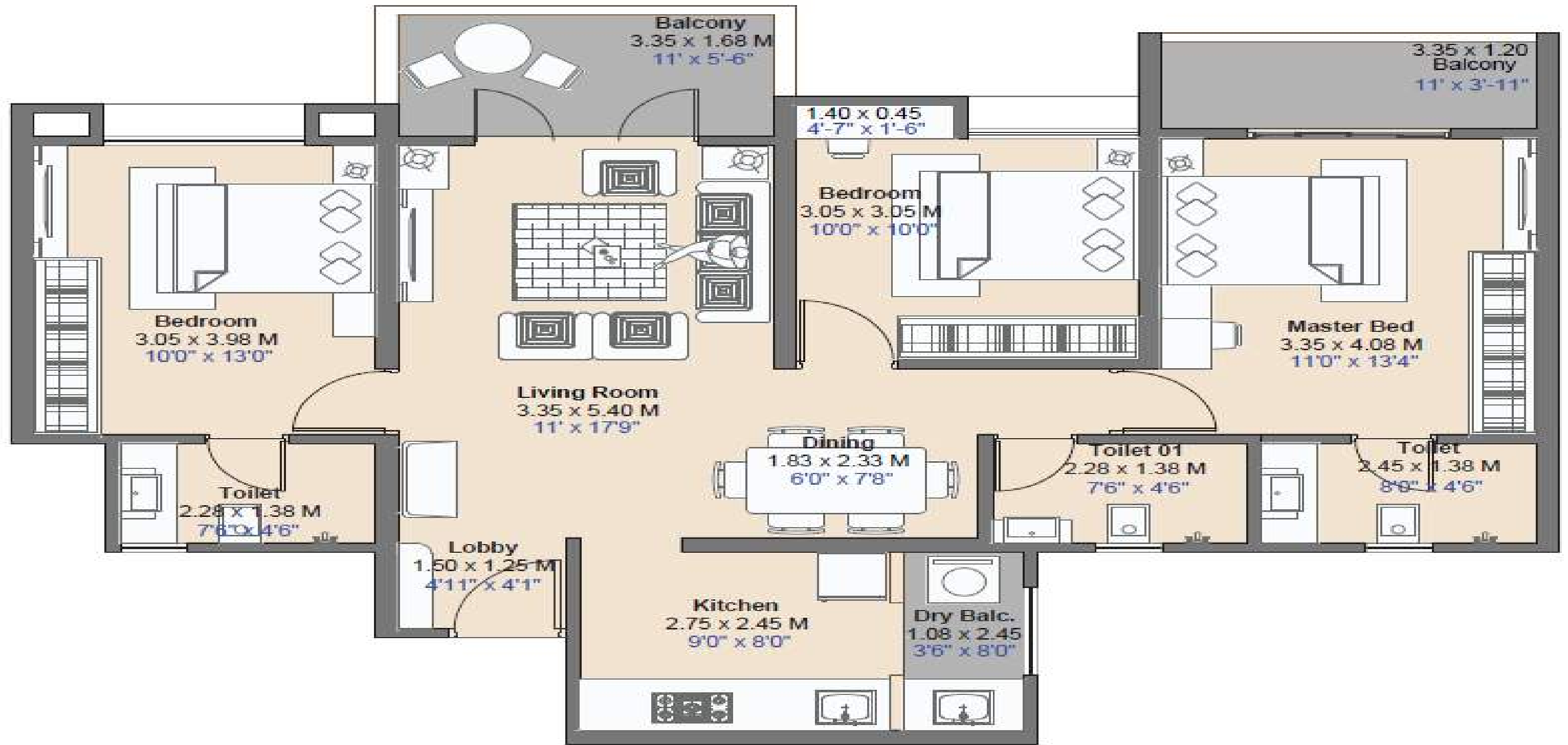
| Type | Carpet Area | | Balcony Area | | Dry Balcony Area | | Total Carpet Area | |
|-------------|-------------|--------|--------------|-------|------------------|-------|-------------------|------|
| | Sqm | Sqft | Sqm | Sqft | Sqm | Sqft | Sqm | Sqft |
| 2 BHK Pre-B | 57.54 | 619.36 | 8.54 | 91.92 | 2.63 | 28.31 | 68.71 | 740 |



| Type | Carpet Area | | Balcony Area | | Dry Balcony Area | | Total Carpet Area | |
|-------------|-------------|--------|--------------|-------|------------------|-------|-------------------|------|
| | Sqm | Sqft | Sqm | Sqft | Sqm | Sqft | Sqm | Sqft |
| 2 BHK Lux-B | 64.00 | 688.90 | 8.72 | 93.86 | 2.75 | 29.60 | 75.47 | 812 |



| Type | Carpet Area | | Balcony Area | | Dry Balcony Area | | Total Carpet Area | |
|-------------|-------------|--------|--------------|-------|------------------|-------|-------------------|------|
| | Sqm | Sqft | Sqm | Sqft | Sqm | Sqft | Sqm | Sqft |
| 3 BHK Pre-B | 71.55 | 770.16 | 9.20 | 99.03 | 2.63 | 28.31 | 83.38 | 898 |



| Type | Carpet Area | | Balcony Area | | Dry Balcony Area | | Total Carpet Area | |
|-------------|-------------|--------|--------------|--------|------------------|-------|-------------------|------|
| | Sqm | Sqft | Sqm | Sqft | Sqm | Sqft | Sqm | Sqft |
| 3 BHK Lux-B | 84.09 | 905.14 | 9.63 | 103.66 | 2.63 | 28.31 | 96.35 | 1037 |

Duplex



3BHK-Duplex
(Typical)

| Type | Carpet Area | | Balcony Area | | Dry Balcony Area | | Total Carpet Area | |
|-----------|-------------|---------|--------------|--------|------------------|-------|-------------------|------|
| | Sqm | Sqft | Sqm | Sqft | Sqm | Sqft | Sqm | Sqft |
| 3 BHK Dup | 111.98 | 1205.35 | 11.04 | 118.83 | 3.21 | 34.55 | 126.23 | 1359 |

BANK Details

Project Name – Kohinoor Kaleido Phases II

Bank Name – IDBI Bank

Branch – Ashok Nagar

Collection A/C

Firm Name – INTOFINITY PROMOTERS PVT LTD PHASE II

**Bank A/C Name – INTOFINITY PROMOTERS PVT LTD RERA DESIGNATED
COLLECTION ACCOUNT FOR PHASE II**

ACCOUNT NO – 0600102000013679

IFSC – IBKL0000600

SAP GL CODE – 10952401

E-TAX

Firm Name – INTOFINITY PROMOTERS PVT LTD

Bank A/C Name – INTOFINITY PROMOTERS PRIVATE LIMITED E TAX A/C

ACCOUNT NO – 0600102000011990

IFSC – IBKL0000600

SAP GL CODE – 10952401

**Kaleido Phase 2
collection Account**



THANK YOU