

CODENAME: DINK
CODENAME: DINK
CODENAME: DINK
CODENAME: DINK
CODENAME: DINK

— **IS BACK** —

NEXT TO KALYAN JEWELLERS, MAGARPATTA ROAD, PUNE

A Project by



CLOSER & FASTER TO EVERYTHING



EASY ACCESS

- Koregaon Park - 17 min (7.2 kms)
- Camp - 18 min (6.7 kms)
- Kalyani Nagar - 22 min (8.7 kms)
- Kharadi - 26 min (9.6 kms)
- Viman Nagar - 27 min (9.5 kms)
- Wanowrie - 17 min (6.9 kms)
- Pune International Airport - 30 min (11 kms)
- Swargate Bus Stand - 23 min (8.8 kms)
- Passport Office - 10 min (4.7 kms)

MALLS & MULTIPLEX

- Season's Mall - 5 min (1.2 kms)
- Amanora Town Centre - 5 min (1.2 kms)
- Phoenix Market city - 23 min (8.4 kms)
- Inorbit mall - 22 min (8.1 kms)

HOSPITAL

- Sahyadri Super Specialty Hospital - 6 min (1.7 kms)
- Noble Hospital - 5 min (1.5 kms)
- Columbia Asia - 16 min (5.5 kms)
- Sanjeevani Hospital - 8 min (2.9 kms)
- Yash Hospital - 4 min (900 mtr)
- Medicare Hospital - Multi Speciality Hospital - 3 min. (600 mtr)
- Viloo Poonawalla Memorial Hospital - 5 min (1.5 kms)

IT & ITES PARK

- Magarpatta Cyber City - 6 min (1.7 kms)
- Planet IT - 2 min (450 mtr)
- EON free Zone - 21 min (7.6 kms)
- World Trade Center - 21 min (7.6 kms)
- SP Infocity - 14 min (5.4 kms)
- Tata consultancy Services (TCS) - 1 min.
- Suzlon ONE Earth - 1 min.

SCHOOLS

- Amanora School - 9 min (2.8 kms)
- The HDFC School - 2 min. (300 mtr.)
- Wisdom world school - 5 min (1.2 kms)
- VIBGYOR International school - 7 min (2.7 kms)
- Pawar Public School - 7 min (1.8 kms)

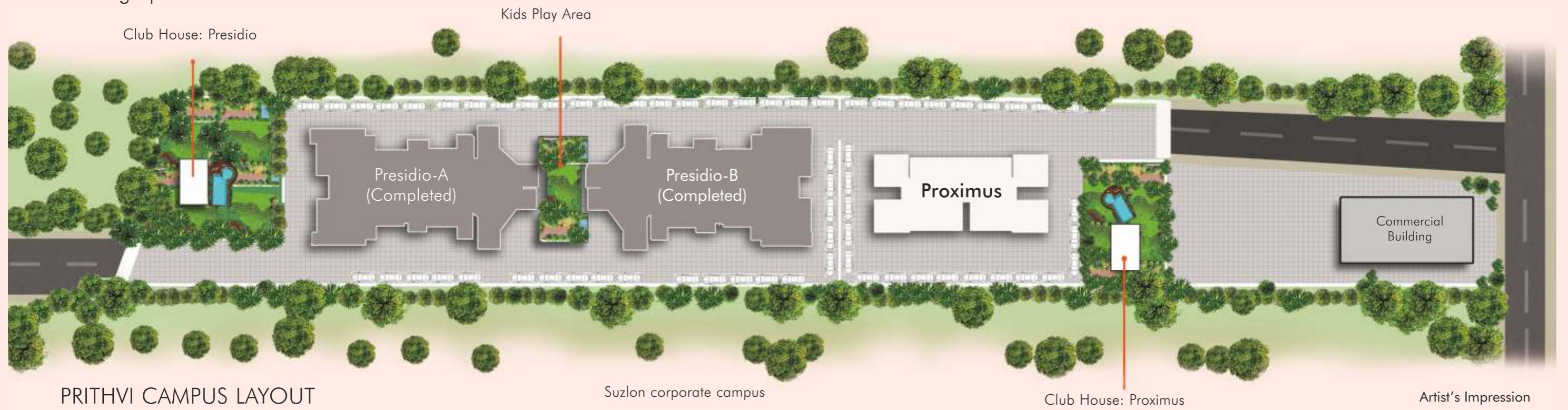
HOTELS

- Four Points by Sheraton - 23 min (8.2 kms)
- Novotel - 22 min (9.9 kms)
- Hyatt - 26 min (9.6 kms)
- Conrad - 25 min (9.9 kms)
- Blue Diamond - 18 min (7.9 kms)
- Amanora The Fern Hotels and Club - 7 min (1.8 kms)
- Manali Resort - 21 min (8.5 kms)

MASTER PLAN

← To Magarpatta

To Amanora near road →





PRITHVI
PROXIMUS

LIVE CONNECTED

NEXT TO KALYAN JEWELLERS, MAGARPATTA

EXCLUSIVE 2 BHK & 3 RHK HOMES

Artist's Impression

TYPICAL FLOOR PLAN



Flat No.	Flat Type	Carpet Area (Sq. Ft)	Balcony (Sq. Ft)	Total (Sq. Ft)
1201A, 1401A, 1501A, 1601A, 1701A	2RHK	473.08	84.00	557
1202A, 1402A, 1502A, 1602A, 1702A	STUDIO	206.25	27.00	233
1203A, 1403A, 1503A, 1603A, 1703A	2BHK	554.88	100.21	655
1204A, 1404A, 1504A, 1604A, 1704A	2BHK	554.88	100.21	655
1205A, 1405A, 1505A, 1605A, 1705A	2RHK	505.37	86.75	592
1206B, 1406B, 1506B, 1606B, 1706B, 1806B	2RHK	505.37	86.75	592
1207B, 1407B, 1507B, 1607B, 1707B, 1807B	STUDIO	206.25	27.00	233
1208B, 1408B, 1508B, 1608B, 1708B, 1808B	2BHK	554.88	109.58	664
1209B, 1409B, 1509B, 1609B, 1709B, 1809B	2BHK	554.88	97.84	653
1210B, 1410B, 1510B, 1610B, 1710B, 1810B	STUDIO	206.25	27.00	233
1211B, 1411B, 1511B, 1611B, 1711B	2RHK	473.08	85.04	558

*For Internal Training Purpose only & Not for External Circulation





**LUXURY WAVES, CLUBHOUSE CHARMS:
EXPERIENCE LIFE BEYOND IMAGINATION.**

STUDIO PLAN



CARPET AREA SQ. FT.	BALCONY AREA SQ. FT.	TOTAL CARPET AREA SQ. FT.
206.25	27.5	233

2 RHK PLAN



CARPET AREA SQ. FT.	BALCONY AREA SQ. FT.	TOTAL CARPET AREA SQ. FT.
473.08	85.04	558



2 BHK PLAN



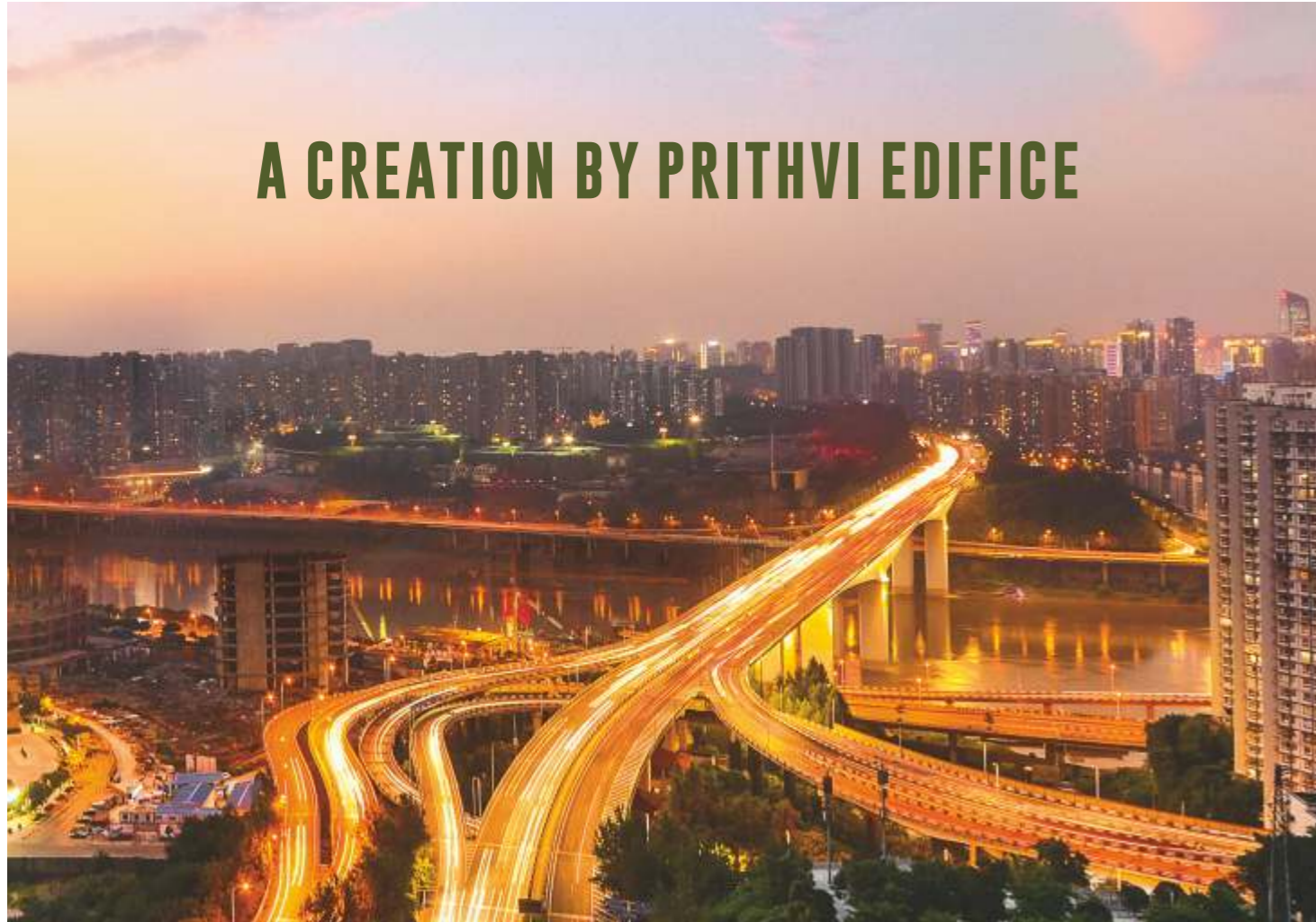
CARPET AREA SQ. FT.	BALCONY AREA SQ. FT.	TOTAL CARPET AREA SQ. FT.
554.88	100.21	655

2 RHK PLAN



CARPET AREA SQ. FT.	BALCONY AREA SQ. FT.	TOTAL CARPET AREA SQ. FT.
505.37	86.75	592

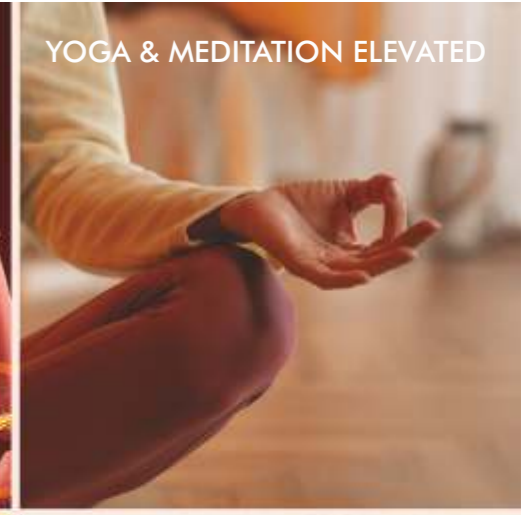
A CREATION BY PRITHVI EDIFICE



CO-WORKING LOUNGE



BYOB LOUNGE



YOGA & MEDITATION ELEVATED



SOCIETY OFFICE



INDOOR GAMES ROOM



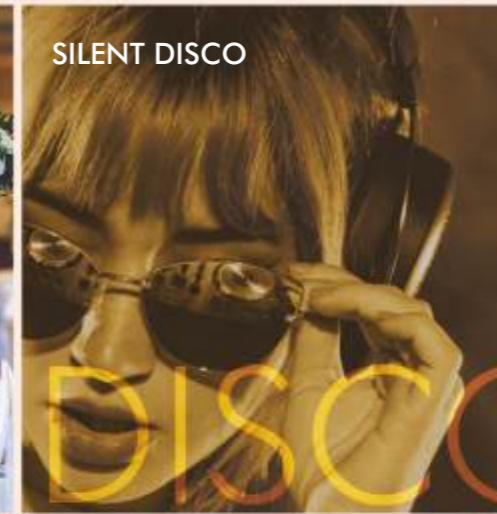
KARAOKE ROOM

LIFESTYLE AMENITIES

- Grand Entrance Lobby
- Clubhouse with Swimming pool
- Co-Working Lounge
- Library
- Well equipped Gymnasium
- Silent Disco
- 12-Seater Mini Theatre
- Yoga Arena
- BYOB Lounge
- Reflexology Path
- Sit-out Corner
- Indoor Game Room with Pool & Table Tennis
- Karaoke Room
- Play Station
- Multipurpose Banquet Area
- Society Office
- Two Level Parking



BANQUET AREA



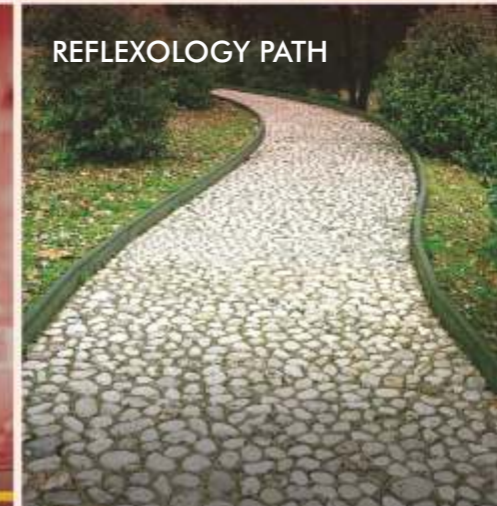
SILENT DISCO



MINI THEATRE



SWIMMING POOL



REFLEXOLOGY PATH



GYM

*For Internal Training Purpose only & Not for External Circulation

Image for Representation purpose only

A Project by



Prithvi Proximus MAHARERA No: P52100021774
<https://maharera.mahaonline.gov.in>