



A Project By



J V PARTNER
Ganesh Gaikwad
Group

Luxurious 1, 2 & 3 BHK Spacious Flats &
Commercial Space @ Keshavnagar (Mundhwa)

Site Address
S. No.9to14, Hissa No.2/1/1, Plot No. 70, Ramashetti Nagar,
Keshav Nagar, Mundhwa Pune-411036

Web Site: goldenvalley.co.in | Email id: sales@goldenvalley.co.in



Disclaimer: All plans, layout, drawing, amenities, specifications, facilities, mentioned in the brochure may be subject to change at the sole discretion of the developers. The constructions shall be as per prevalent rules & regulation, subject to necessary approvals.



Introducing a Golden Opportunity

Golden Valley is a masterpiece from the house of Buildwrick Spaces that is creatively designed to offer you the life and lifestyle that you desire, demand and most rightly deserve. Because it is here that the ordinary ends and the extraordinary take flight in homes that delight your senses and reflect your accomplishments. Get ready to experience the life of gold in a 1, 2 or 3BHK space of your choice at Keshavnagar, Mundhwa.

- Residential and Commercial Spaces
- Shops & Offices
- Advantageous location of Keshavnagar
- Luxurious Amenities and Services





Where Commerce Shines Bright

The highly coveted, premium commercial units at the Golden Valley located within close proximity to several of the city's landmarks will surely be in the spotlight of commercial activity. And with everything within reach, footfalls to this commercial establishment will only soar. This flourishing commerce will enhance your life further making it a remarkable mix of serenity and action.





Golden Valley – The Golden Lifestyle

We all dream of a home lasting and true. Here's an address that promises to elevate not just your lifestyle, but the fabric of the entire neighbourhood. Residential apartments set amidst the retail and commercial spaces of the future heighten the convenience that Golden Valley is set to offer. With inspiring spaces inside out, prepare to sparkle and shine from within. A golden home of your own at Golden Valley, Keshavnagar is the perfect way to bring out the best in you.





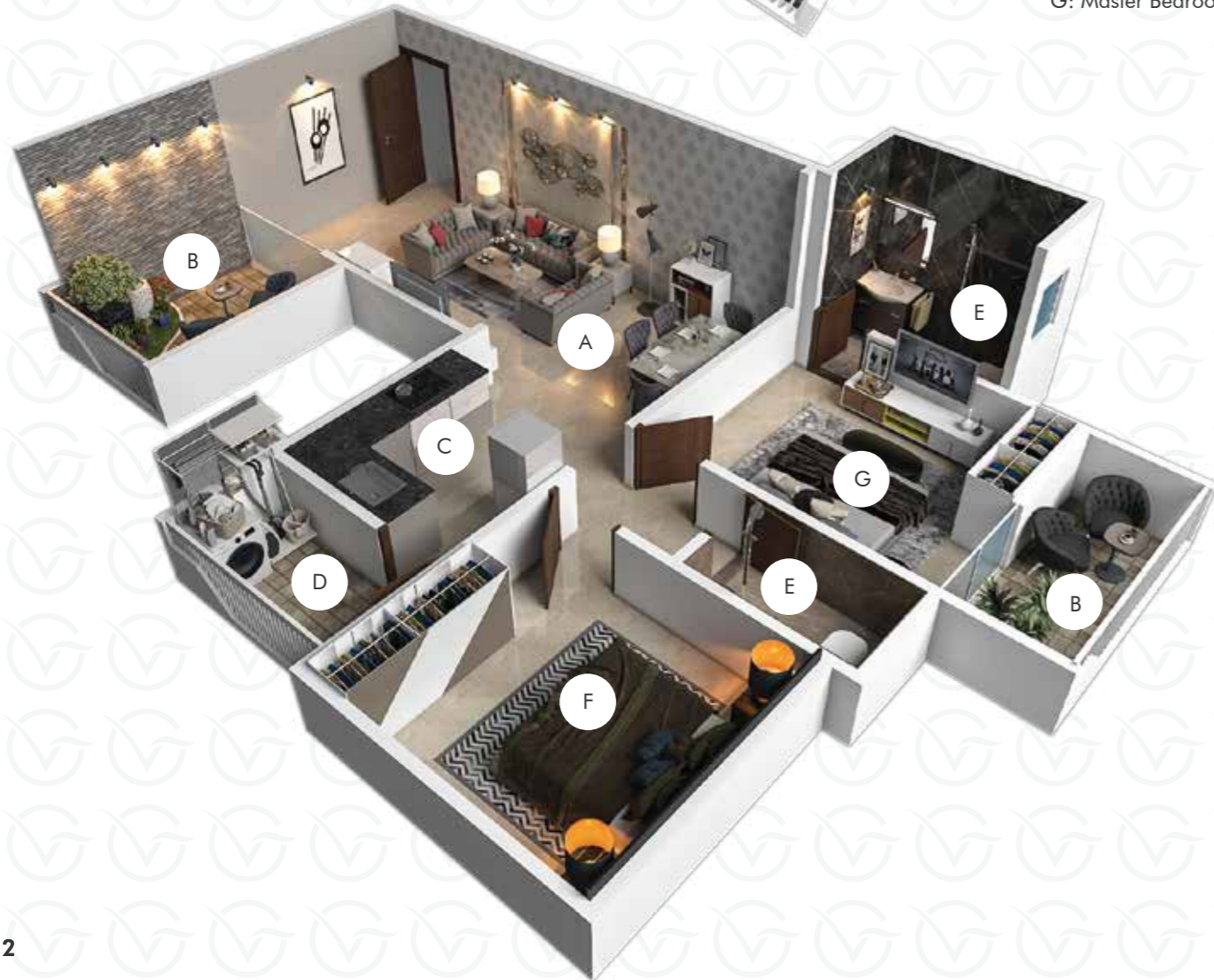
Type 1



- A: Living Room
- B: Terrace
- C: Kitchen
- D: Dry Balcony
- E: WC / Bath
- F: Kids Bedroom
- G: Master Bedroom

2 BHK

CUT SECTIONS



Type 2





Experience a Shimmering Life

A quaint life by the water side is like a dream come true. Come, witness blossoming nature in all its glory at these riverside residences. Gaze at the flight of winged friends and feel the evening breeze at this waterfront. At shimmer to your life at Golden Valley.



The Golden Living at Golden Valley

Every space, feature and amenity at Golden Valley is designed for the connoisseurs of luxury and great living. The amenities are planned to create luxurious, but functional spaces, which will change the way you have been living indoors or relishing the outdoors.

Young or old, indulge in the amenities at Golden Valley for family and friends' time that is truly gold. The golden life you dreamt of is shaping up right here.

Amenities for a Glittering Lifestyle

Fitness & Activity



Gymnasium



Club House



Multipurpose Hall



Swimming Pool



Shower & Washrooms



Changing Rooms



Jogging Pathway

Games & Utilities



Open Amphitheatre

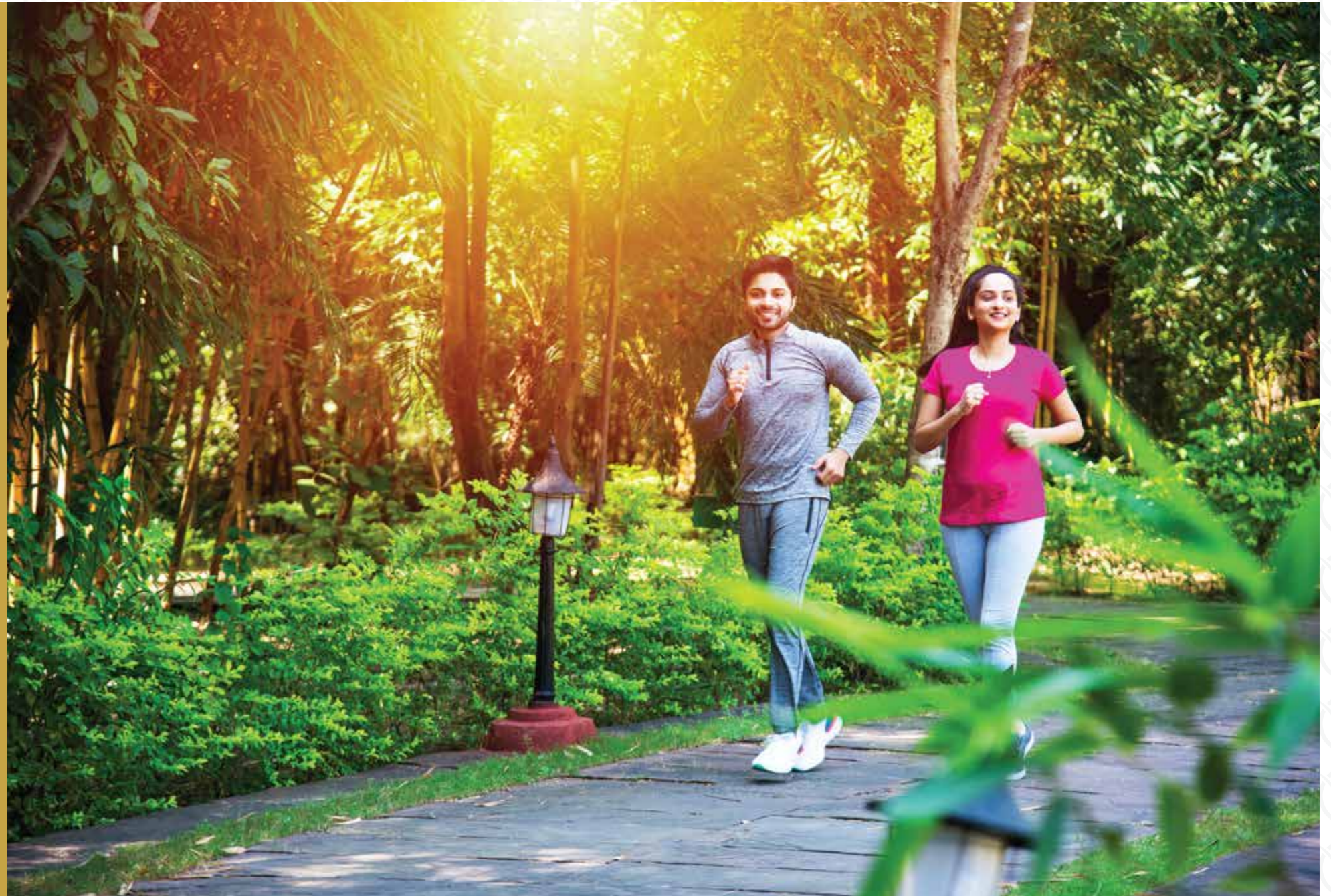


Multipurpose Party Lawn

Ecology & Nature



Landscape Garden



SWIMMING POOL VIEW | Artist Visualisation

Leisure & Relaxation



Senior Citizen Court



Gazebo Pergola in Lawn



View Deck



Garden Benches

Spirituality & Wellness



Stylized Temple



Yoga Space



Acupressure Pathway

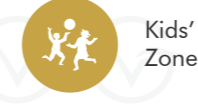


Cascading Fountain Space

Kids' Sports and Adventure



Kids' Pool



Kids' Play Zone



Children's Multi Play Space



Toddlers Play Pen

Security



Video Door Phone



Intercom System





The Golden Edge of Comfort & Engineering

Specifications

Structure & Brickwork

- Earthquake resistant R.C.C. Frame structure
- 5 thick fly ash brick / siporex work internally & externally

Plaster

- External sand faced cement plaster
- Internal Gypsum/POP Finished Wall

Electrification

- Modular Switches
- Adequate electrical point with Mcb
- TV & Telephone Point in Living room
- AC point in Master Bedroom

Flooring

- 600mm x 1200mm Vitrified flooring for entire flat
- Anti-skid flooring for toilets, bath and Attached Terraces

Kitchen

- Granite kitchen platform (otta) with SS Sink
- Designer Wall tiles upto lintel level
- Provision for exhaust fan

Doors

- All doors decorative laminated flush doors

Digital main door lock

- Granite door frame for toilets/bath/WC
- Wooden door frame for main door & bedroom doors

Bathroom

- Designer glazed wall tiles upto lintel level
- Hot & cold single lever diverter provided in washroom
- Provision for exhaust fan

Windows

- Power coated aluminium windows with mosquito net
- Granite frame for windows

Lift

- Automatic standard make lifts with power back-up

Painting

- Internal Oil Bound Distemper
- External Weather Shield Acrylic Paint

Security & Safety

- Security Cabin
- Fire Security System
- CCTV Surveillance
- Power Backup for Common Areas
- Intercom Facility
- Entrance Lobby

Eco-friendly System

- Rain Water Harvesting
- Solar Heating System
- High-speed Elevators
- Street Lights
- STP (Sewage Treatment Plant)
- Covered and Open Car Parking



SITTING AREA | Artist Visualisation



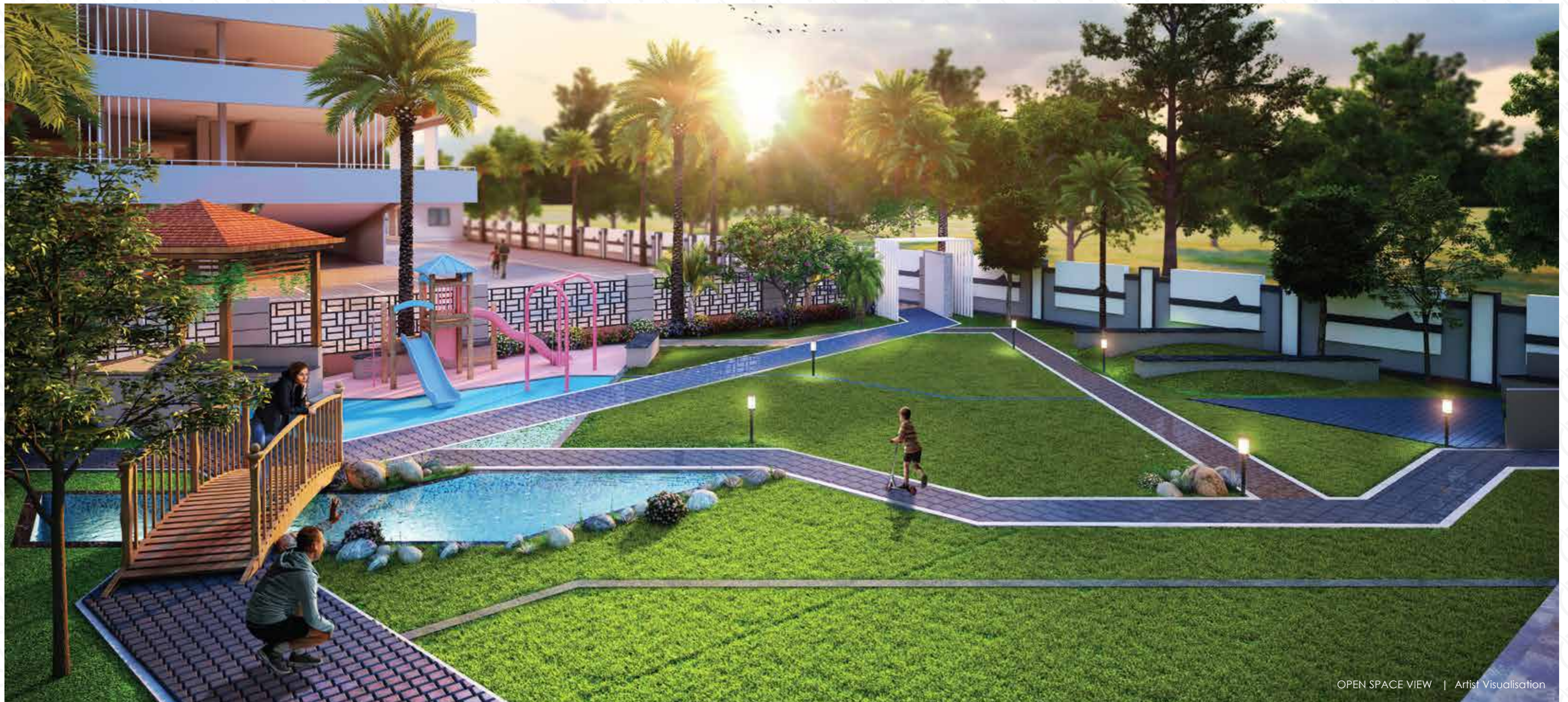
SWIMMING POOL BIRD-EYE VIEW | Artist Visualisation



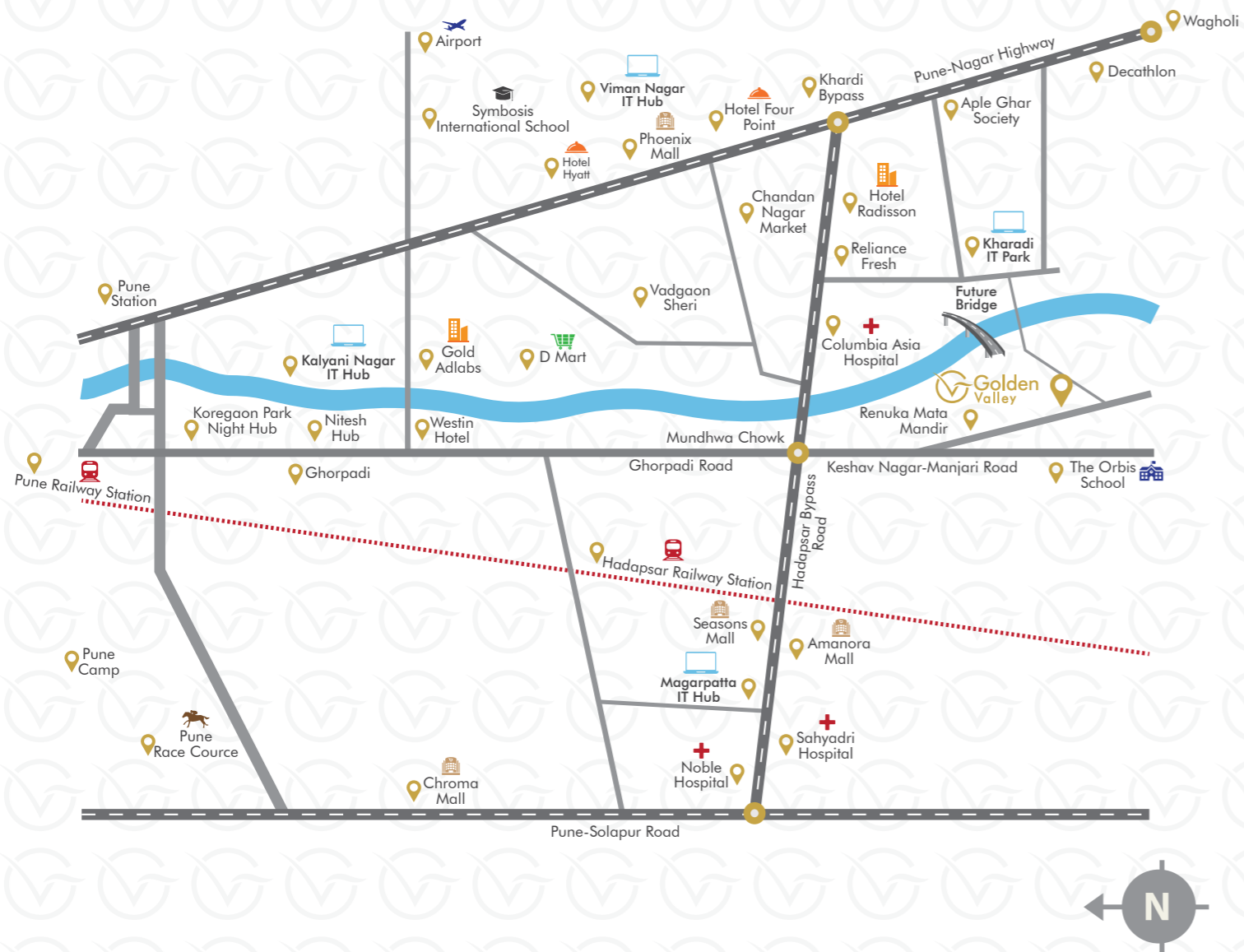
CLUB HOUSE - BIRD EYE VIEW | Artist Visualisation



Children Play Area | Artist Visualisation



OPEN SPACE VIEW | Artist Visualisation



Location Highlights

With prime city hot-spots within close proximity, Golden Valley's reach is one of its highlights. Great accessibility to major IT Parks, Entertainment Zones, Shopping Malls, Educational Institutes, Hospitals etc. is its hallmark. Enjoy travelling faster to the most important locales of the city, saving time and effort. A robust network of roads, proximity to the important highways, and the nearness to the Pune International Airport heightens connectivity to Golden Valley and also the world beyond. Commute to work in minutes or engage in entertainment activities down the road, everything is just at a stone throw distance from the ever-evolving Keshavnagar

Connectivity:

- Pune International Airport 20 Mins
- Pune Railway Station 30 Mins
- IT Parks/MIDC Area 10 Mins

Educational Institutes:

- Dhole Patil Junior College 15 Mins
- Orbis School 05 Mins
- The Kalyani School 15 Mins

Hotels:

- Fairfield by Marriott 18 Mins
- Hyatt Hotel 29 Mins
- Novotel Hotel 28 Mins

Hospitals:

- Noble Hospital 15 Mins
- Columbia Asia Hospital 08 Mins

Shopping & Entertainment Centres

- Amanora Mall 10 Mins
- Seasons Mall 10 Mins
- Phoenix Market City 15 Mins

A proposed bridge in the future will make Kharadi just 5 mins away from Golden Valley.

The Golden Brand

Buildwick Spaces has crafted homes that have changed the face and pace of the real estate industry. With the singular objective to create spaces that are lifestyle-enhancing, yet budget-friendly, Buildwick Spaces has gone and beyond to exceed the expectations of its patrons and also potential homeowners. Because, at Buildwick Spaces, every inch of space is created with the pursuit of excellence and to set a new benchmark. Change is the only constant and so Buildwick Spaces strives to change the way spaces are envisioned, created, and utilized.

With the vision to become the most trusted and loved real estate partner to property owners across residential, commercial and mixed-use developments, Buildwick Spaces are shaping the world.

The Shining Brand Journey

Trustworthy Experience & Expertise

'Customer-First' Approach

Credits

Architect
Atit Admulwar

Legal Advisor
Madhukar Kokane

RCC Consultant
G A Bhilare

Landscape designer
Atul Raut

Strategic Marketing
Venus Realty

Brand Consultant
Quirious Design Pvt. Ltd.

