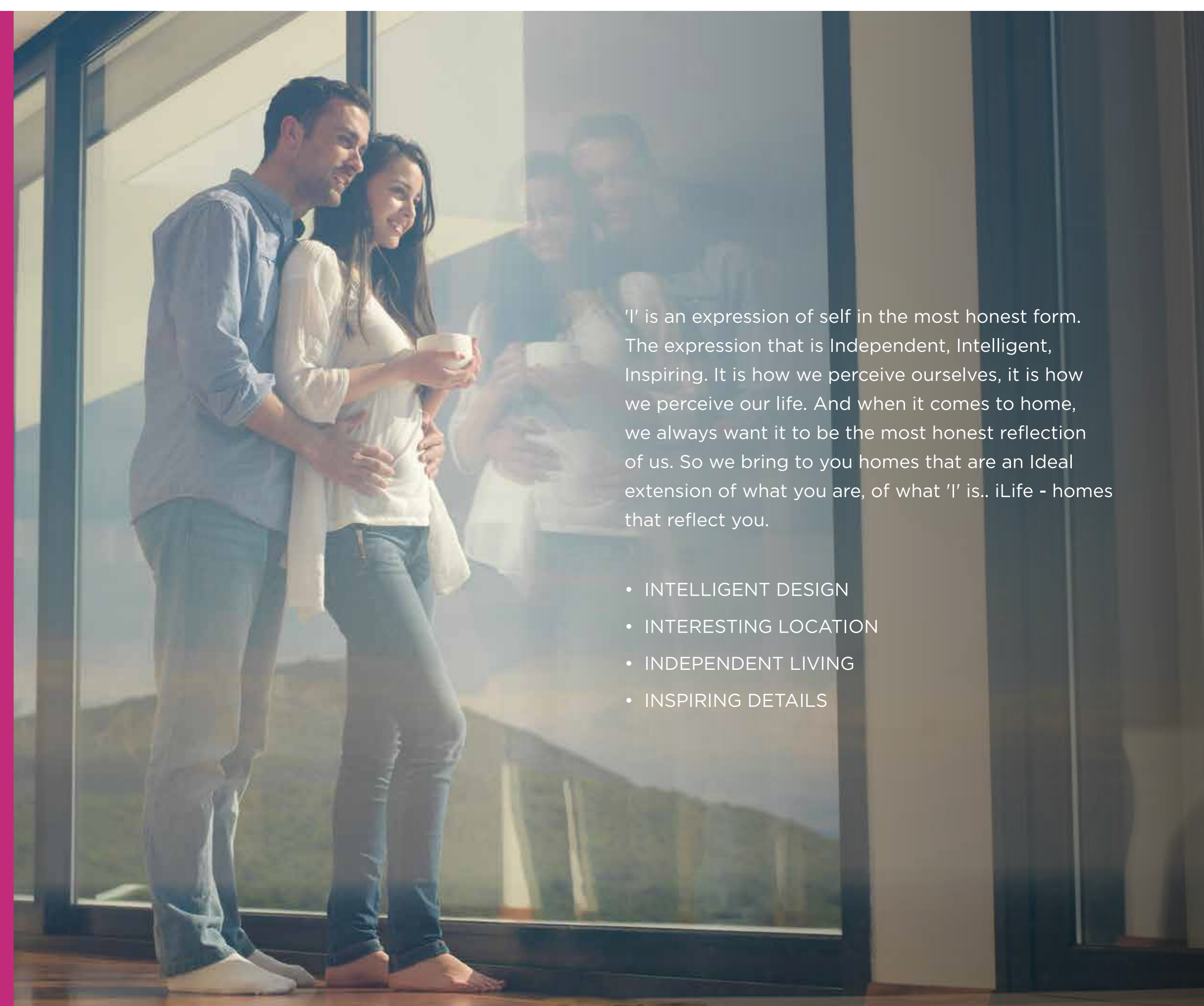


# LIVE VIBRANT

**iLIFE**  
— MUNDHWA —

2 & 3 BHK RESIDENCES,  
SHOPS AND COMMERCIAL SPACES

# IDEAL HOMES, IDEAL REFLECTION OF YOU



'I' is an expression of self in the most honest form. The expression that is Independent, Intelligent, Inspiring. It is how we perceive ourselves, it is how we perceive our life. And when it comes to home, we always want it to be the most honest reflection of us. So we bring to you homes that are an Ideal extension of what you are, of what 'I' is.. iLife - homes that reflect you.

- INTELLIGENT DESIGN
- INTERESTING LOCATION
- INDEPENDENT LIVING
- INSPIRING DETAILS

---

With a tint of luxury and hues of poise, homes at iLife are a vibrant expression of you. Thoughtfully designed spread of 2 & 3 BHK homes nestled in the most happening vibe of Pune make for a perfect place to live laid back moments while being connected to the dynamism.

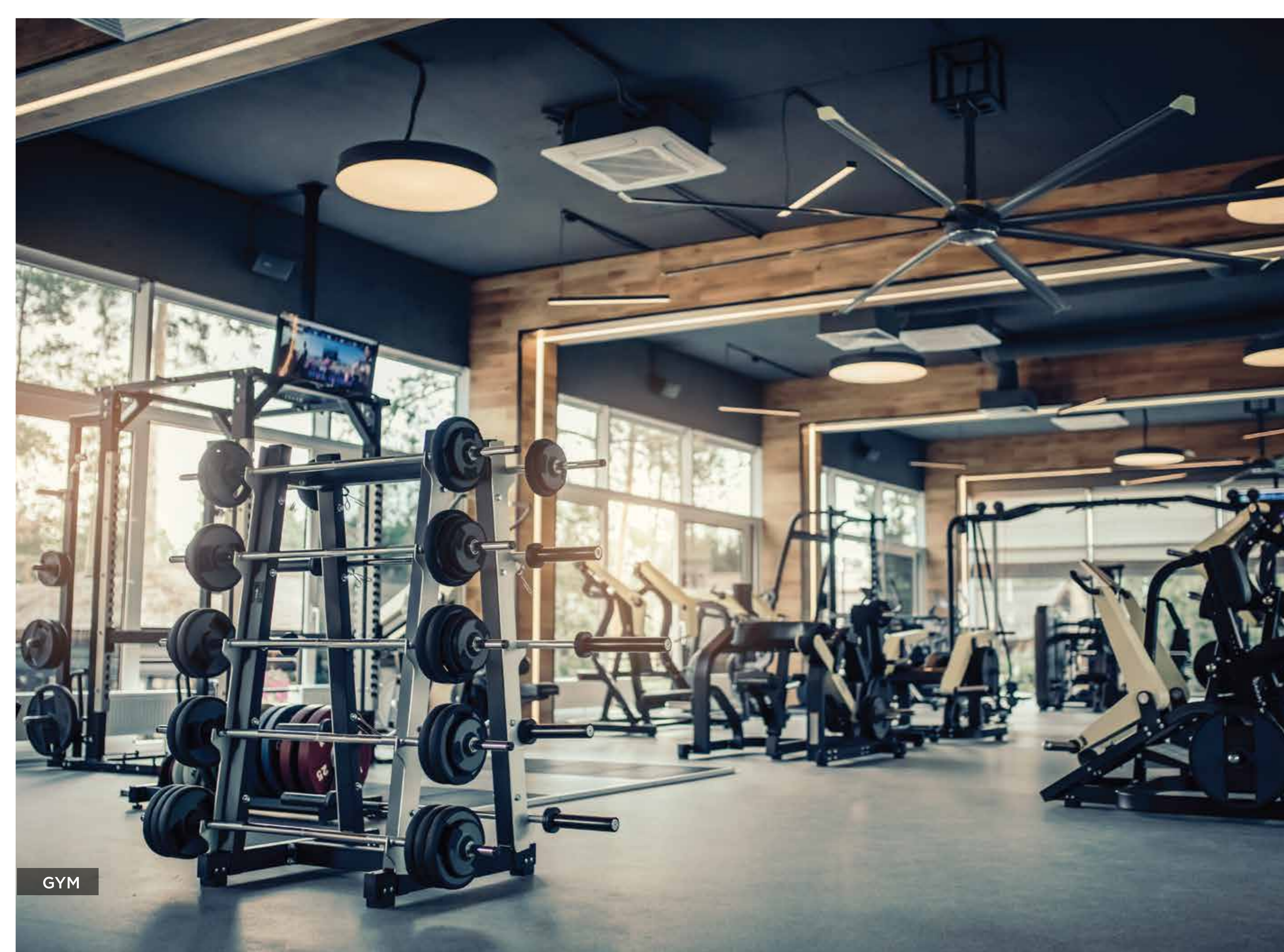
---

# INDEPENDENT HOMES

PEACEFUL PLACE IN THE CITY



\*Artistic Impression



GYM



GUEST ROOM



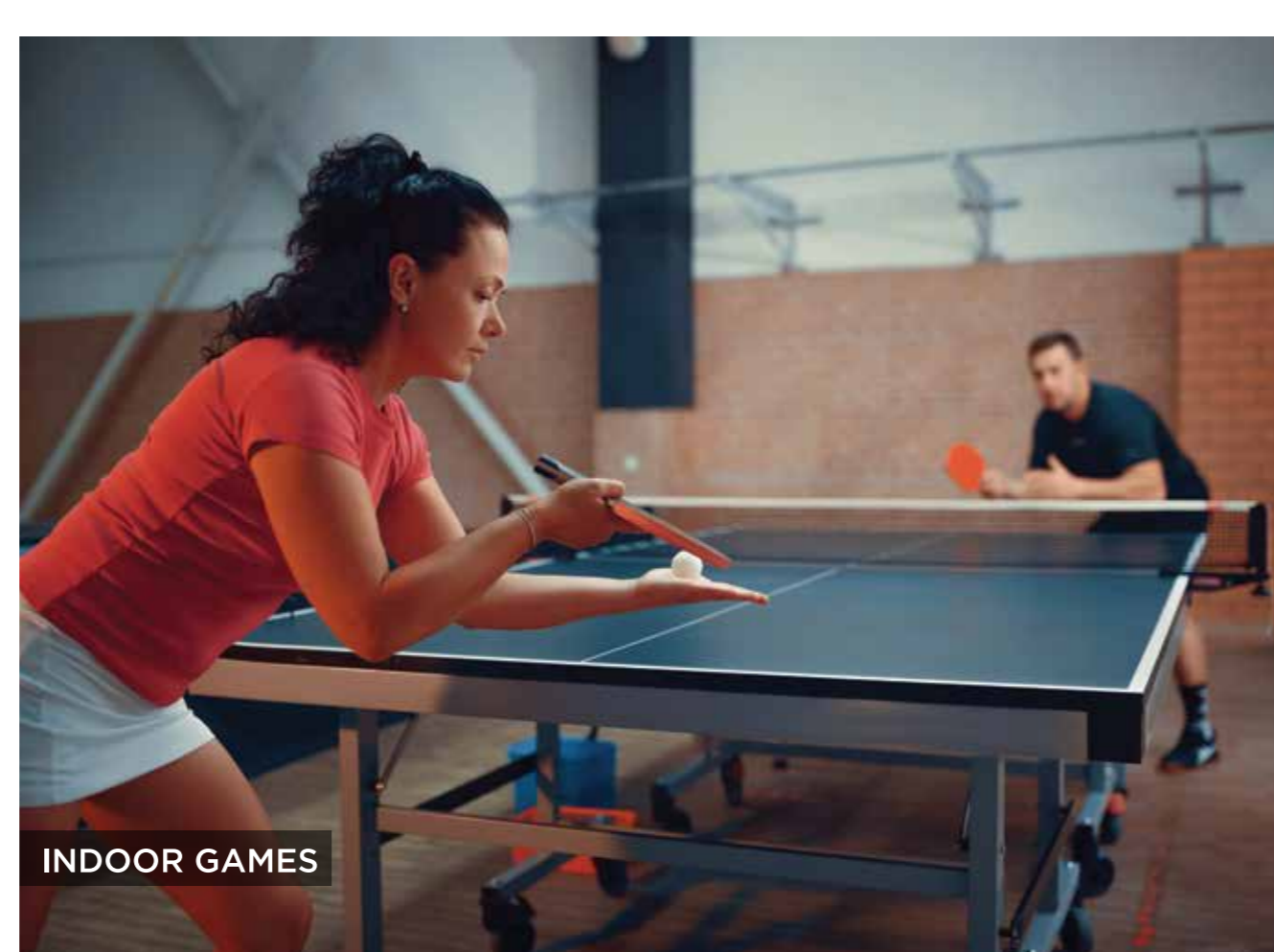
AMPHITHEATRE



SPLASH POOL



BARBEQUE



INDOOR GAMES



TERRACE GARDEN

\*All images for representation purpose only

## IMPRESSIVE AMENITIES

for Alpha and Omega

- **Splash Pool**

For Fun Family Time

- **Children's Play Area**

A safe and secure space for children to be themselves

- **Crèche with Toddler Games**

A little corner to make sure the little ones are comfortable

- **Well-equipped Gym**

For you to make fitness a lifestyle

- **Co-working Space**

A quiet space for some focused working experience

- **Multipurpose Hall**

Table Tennis | Movie Screening | Chess | Carrom | Foosball

- **Party Lawn**

Planning get togethers made easier

- **Alfresco Barbeque**

To make sure your get togethers are fun filled and yummy too

- **Senior Citizen Area**

For chatty evenings and quiet moments

- **Reflexology Path**

An effortless therapeutic experience

- **Yoga and Meditation zone**

A tranquil space to unwind and get in touch with yourself

- **Common Guest Room**

For when the relatives come to visit

- **24x7 Espresso Bar**

A quick getaway for coffee and conversations

- **Temple with Tulsi Vrindavan**

A divine escape that allows you to get in touch with spirituality

- **Gazebo**

A cozy set up for coffee and conversations

- **Family Dining Area**

For intimate family dinners

- **Amphitheatre**

A platform for the stars to perform

- **EV Charging Point**

For those who choose sustainable vehicles

- **Pet Park**

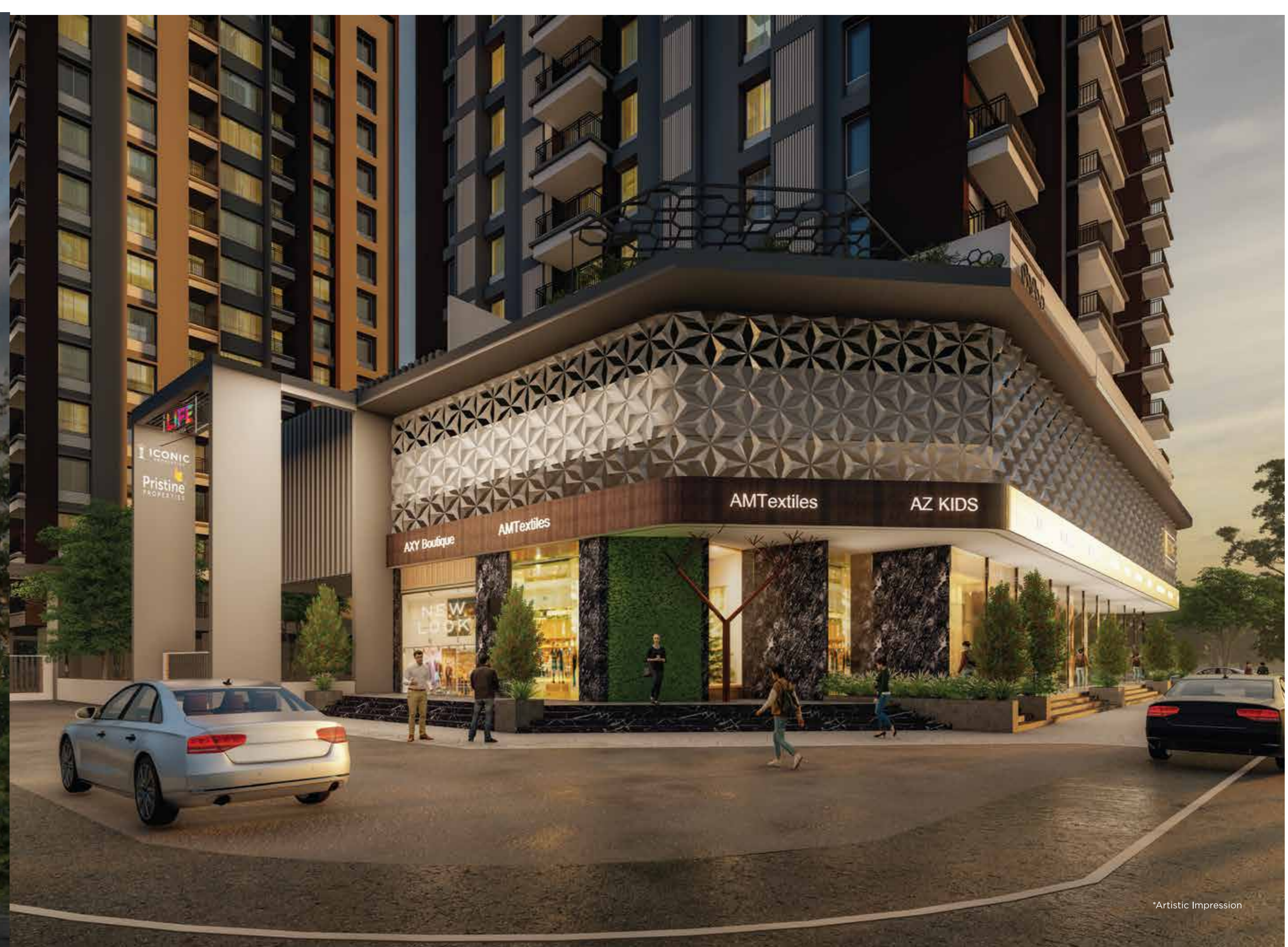
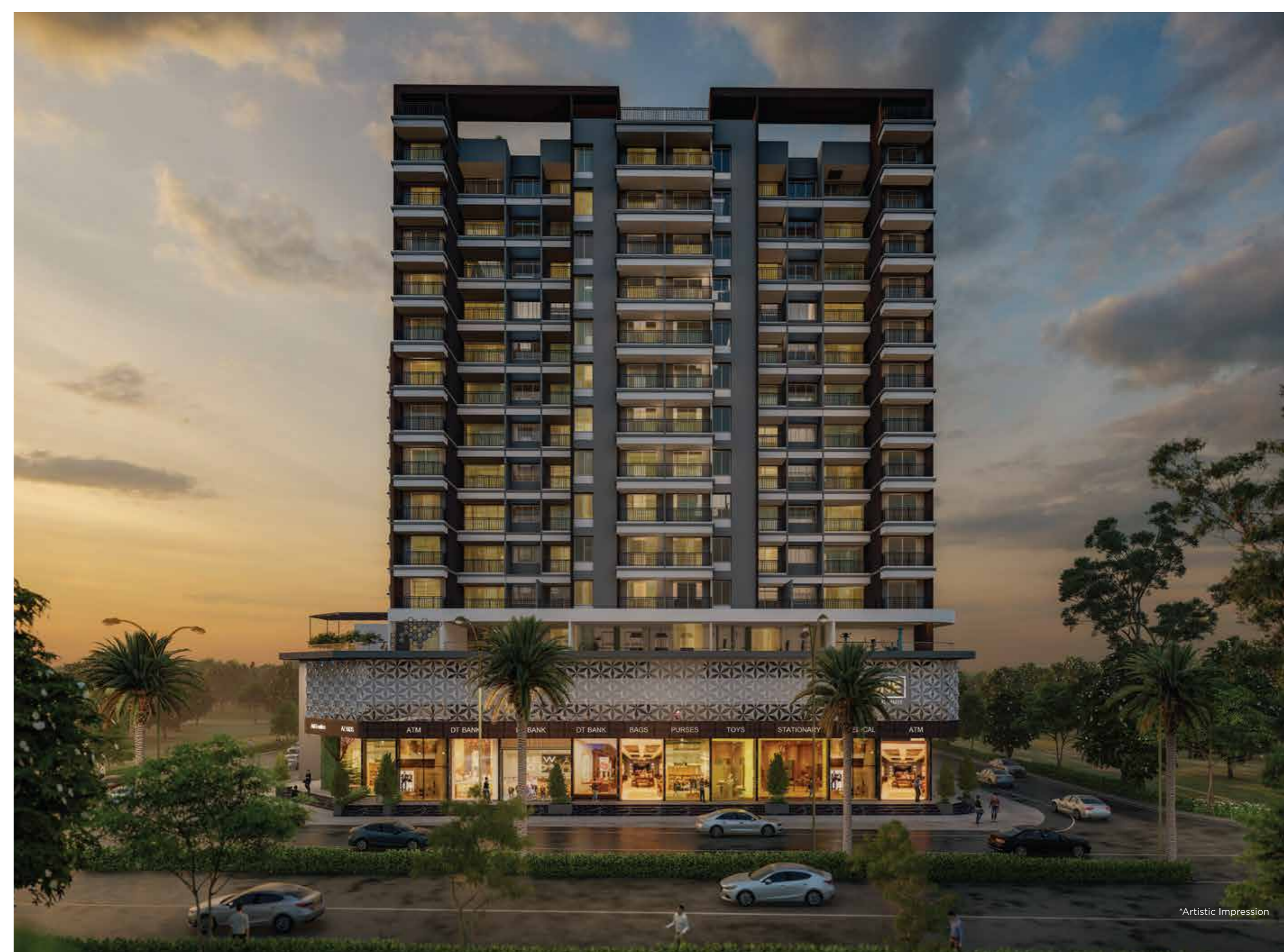
A dedicated zone to walk your pets

- **Video Door Phone**

Safety and security for you and your family

- **Conference Room**

- **Dedicated Society Office**

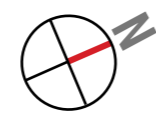


# ROOFTOP AMENITIES

**BUILDING - ALPHA**



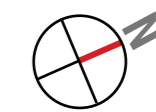
1. Terrace Entry
2. Hardscape
3. Artificial Lawn
4. Tulsi Vrindavan
5. Temple
6. Swing
7. Barbeque Area
8. Reflexology Path/Acupressure Walk
9. Green Alley
10. Courtyard/Senior Citizen Sit-out
11. Party Lawn
12. Stage
13. Wooden Deck
14. Gazebo
15. Splash Pool
16. Children's Play Area
17. Mother's Den
18. Charging Point



# 3<sup>rd</sup> FLOOR PLAN



1. Entry
2. Palm Tree Feature
3. Gym
4. Yoga and Meditation Zone
5. Outdoor Gym/Gymnastics
6. Co-working Space
7. Common Toilet for co-working space
8. Co-working Terrace
9. Multipurpose Hall
10. Table Tennis
11. Chess, Carrom, Foosball
12. Movie Screening
13. Semi Open Co-Working Space with Wifi Zone and charging station
14. 24x7 Espresso Bar
15. Crèche
16. Toddlers' Play Area
17. Sit-out Plaza
18. Toilets



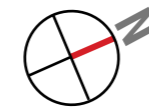
| Flats           | Unit type | Carpet Area (sq.m.) | Carpet Area (sq.ft.) | Garden Terrace Area (sq.ft.) |
|-----------------|-----------|---------------------|----------------------|------------------------------|
| 3 RD FLOOR PLAN |           |                     |                      |                              |
| 301             | 2BHK      |                     |                      |                              |
| 302             | 3BHK      |                     |                      |                              |
| AMENITIES       |           |                     |                      |                              |
| 303             | 3BHK      | 96.92               | 1043                 | 1498                         |
| 304             | 2BHK      | 73.15               | 787                  | 139                          |
| 305             | 2BHK      | 73.15               | 787                  | 139                          |
| 306             | 3BHK      | 96.92               | 1043                 | 591                          |
| 307             | 3BHK      |                     |                      |                              |
| 308             | 2BHK      |                     |                      |                              |
| AMENITIES       |           |                     |                      |                              |

# ROOFTOP AMENITIES

**BUILDING - OMEGA**



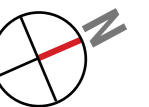
1. Rooftop Entry
2. Splash Pool
3. Reflexology Acupressure Deck
4. Children's Play Area
5. Mother's Den
6. Gazebo
7. Party Lawn
8. Stage with Pergola
9. Entrance Green Courtyard
10. Stepping Stones
11. Barbeque Area
12. Swing
13. Senior Citizen Zone
14. Temple
15. Tulsi Vrindavan
16. Outdoor Gym
17. Meditation/Yoga Deck
18. Charging Station



# 1<sup>ST</sup> FLOOR PLAN



1. Podium Entry
2. Multipurpose Hall
3. Table Tennis
4. Carrom, Chess
5. Movie Projection Screen
6. Crèche
7. Gym
8. Co-working Space
9. 24x7 Espresso Bar
10. Coffee Table
11. Common Toilets



| Flats                  | Unit type | Carpet Area (sq.m.) | Carpet Area (sq.ft.) | Garden Terrace Area (sq.ft.) |
|------------------------|-----------|---------------------|----------------------|------------------------------|
| <b>1 ST FLOOR PLAN</b> |           |                     |                      |                              |
| 101                    | 2.5BHK    | 80.85               | 870                  | 157                          |
| 102                    | 2BHK      | 61.46               | 662                  | 322                          |
| 103                    | 2BHK      | 61.19               | 659                  | 45                           |
| 104                    | 2BHK      | 61.46               | 662                  | 349                          |
| 105                    | 2.5BHK    | <b>AMENITIES</b>    |                      |                              |
| 106                    | 2BHK      | <b>AMENITIES</b>    |                      |                              |



### 5<sup>th</sup> to 7<sup>th</sup>, 9<sup>th</sup> to 12<sup>th</sup> & 14<sup>th</sup> FLOOR PLAN

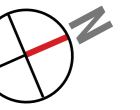
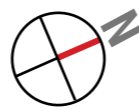


| Flats   | Unit type | Carpet Area (sq.m.) | Carpet Area (sq.ft.) |
|---|-----------|---------------------|----------------------|
| <b>5<sup>th</sup>, 6<sup>th</sup>, 7<sup>th</sup>, 9<sup>th</sup>, 10<sup>th</sup>, 11<sup>th</sup>, 12<sup>th</sup> &amp; 14<sup>th</sup> FLOOR PLAN</b> |           |                     |                      |
| 501,601,701,901,1001,1101,1201,1401   | 2BHK      | 73.15               | 787                  |
| 502,602,702,902,1002,1102,1202,1402   | 3BHK      | 96.91               | 1043                 |
| 503,603,703,903,1003,1103,1203,1403   | 3BHK      | 96.91               | 1043                 |
| 504,604,704,904,1004,1104,1204,1404   | 2BHK      | 73.14               | 787                  |
| 505,605,705,905,1005,1105,1205,1405   | 2BHK      | 73.14               | 787                  |
| 506,606,706,906,1006,1106,1206,1406   | 3BHK      | 96.91               | 1043                 |
| 507,607,707,907,1007,1107,1207,1407   | 3BHK      | 96.91               | 1043                 |
| 508,608,708,908,1008,1108,1208,1408   | 2BHK      | 73.15               | 787                  |

### 3<sup>rd</sup> to 6<sup>th</sup>, 8<sup>th</sup> to 11<sup>th</sup>, 13<sup>th</sup>, 14<sup>th</sup> FLOOR PLAN



| Flats  | Unit type | Carpet Area (sq.m.) | Carpet Area (sq.ft.) |
|--|-----------|---------------------|----------------------|
| <b>3<sup>rd</sup>, 4<sup>th</sup>, 5<sup>th</sup>, 6<sup>th</sup>, 8<sup>th</sup>, 9<sup>th</sup>, 10<sup>th</sup>, 11<sup>th</sup>, 13<sup>th</sup>, 14<sup>th</sup> FLOOR PLAN</b> |           |                     |                      |
| 301,401,501,601,801,901,1001,1101,1301,1401  | 2.5BHK    | 80.85               | 870                  |
| 302,402,502,602,802,902,1002,1102,1302,1402  | 2BHK      | 61.46               | 662                  |
| 303,403,503,603,803,903,1003,1103,1303,1403  | 2BHK      | 61.19               | 659                  |
| 304,404,504,604,804,904,1004,1104,1304,1404  | 2BHK      | 61.46               | 662                  |
| 305,405,505,605,805,905,1005,1105,1305,1405  | 2.5BHK    | 80.85               | 870                  |
| 306,406,506,606,806,906,1006,1106,1306,1406  | 2BHK      | 61.19               | 659                  |





\*Artistic Impression

# IDEAL SPECIFICATIONS

Sleek and stylish specifications that inspire an elevated lifestyle

## STRUCTURE

- Earthquake Resistant R.C.C. Framed Structure
- Internal & External Walls of AAC/Fly Ash Brick or equivalent
- Internal Gypsum Finish Plaster & External Sand Finish Plaster

## KITCHEN

- Granite Platform
- Stainless Steel Sink with drainboard
- Designer Glazed Tiles above Otta Top
- Provision for Exhaust Fan
- Provision for Water Purifier

## DRY BALCONY

- Washing Machine Point
- Proper Water Inlet & Outlet Points

## FLOORING

- Double Charged Vitrified Tiles
- Anti-skid Tiles in Terrace
- Designer Glazed Dado Tiles & Anti-skid Tiles for Flooring in Toilets
- Wooden Finish Tiles in Master Bedroom

## DOORS

- Laminated Main door with Lock of a Good Brand
- Laminated Flush Waterproof Doors for Toilets
- Aluminium Sliding Doors for Terrace
- Granite Door Frame in Bath/WC
- Wooden Door Frames Elsewhere
- Mortise Locks Elsewhere

## ELECTRICALS

- Inverter & Wi-Fi Point above Loft
- AC Point in Master Bedroom & Living Room
- Switches of Good Brand
- Video Door Phone

## BATHROOMS

- Glass Partition in Master Bedroom Toilet
- Solar Water Connection in Common Bathroom
- Geyser Point
- CP/Sanitaryware of good brand



**i ZONE**  
PREMIUM COMMERCIAL SPACES

ATM    MEDICAL    STATIONARY    TOYS    PURSES    BAGS    DT BANK    DT BANK    DT BANK    DT BANK    PROVISION STORE    MEDICAL

NEW LOOK

NEW LOOK

LIFE  
ONIC  
stine  
series

**2 BHK ROYALE**  
787 sq ft

**ALPHA (A)**



**2 BHK**  
659 sq ft

**OMEGA (B)**



**3 BHK ROYALE**  
1043 sq ft

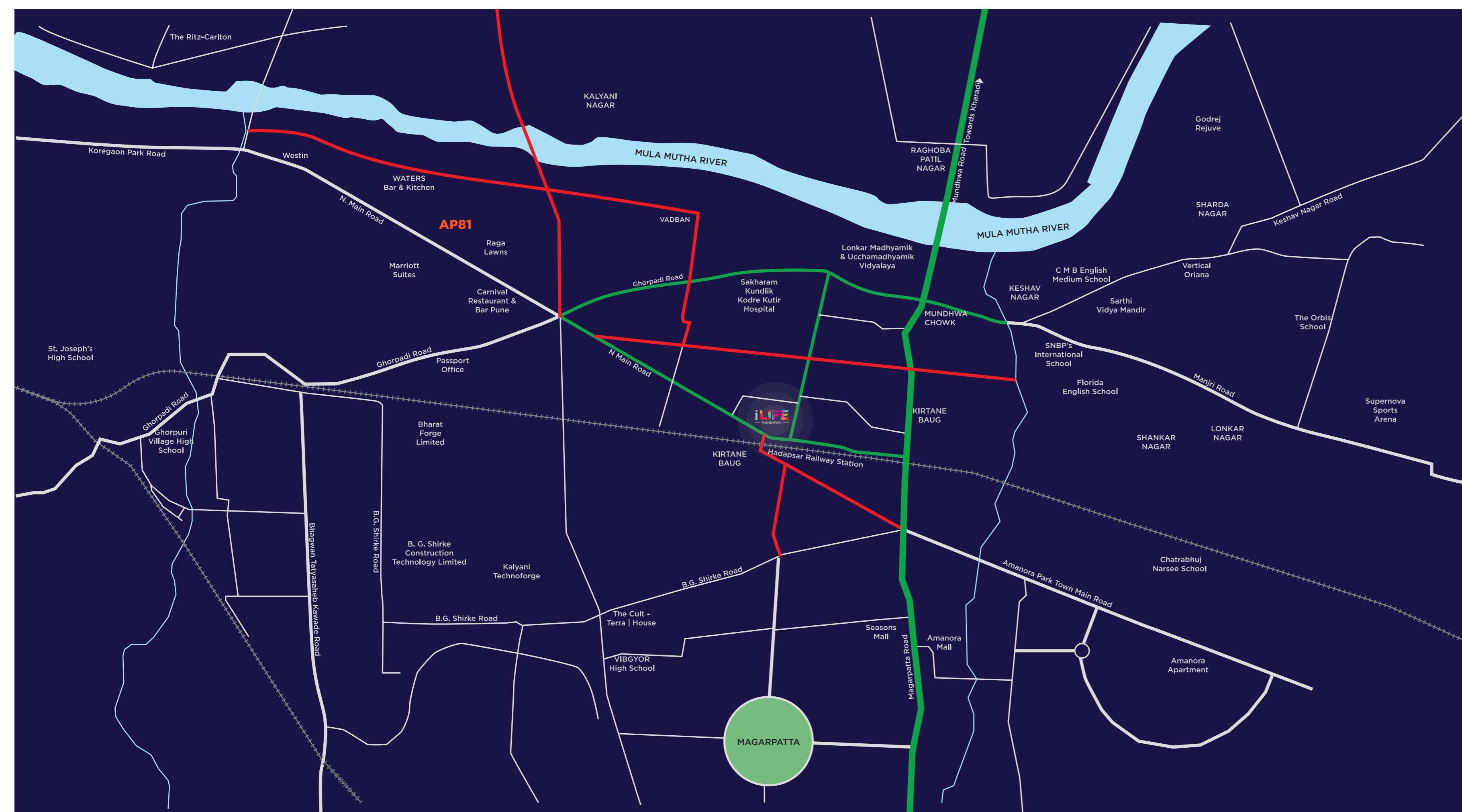
**ALPHA (A)**



**3 BHK LUXURY**  
870 sq ft

**OMEGA (B)**





### Entertainment



- Marriott Suites - 2.4 Km
- Seasons Mall - 2.5 Km
- Amanora Mall - 2.7 Km
- Westin - 4.2 Km
- Vascon Mariplex - 4.5 Km
- Hyatt Regency - 6.4 Km
- Phoenix Marketcity - 6.4 Km
- Novotel - 8.0 Km

### Employment Hubs



- Cyber City IT park - 4.2 Km
- Cerebrum IT Park - 4.6 Km
- International Tech Park - 4.7 Km
- World Trade Center - 5.2 Km
- EON IT Park - 5.4 Km
- Phursungi IT Park - 8.4 Km

### Hospitals



- Manipal Hospital - 1.6 Km
- Noble Hospital - 2.7 Km
- Villo Poonawala - 2.8 Km
- Columbia Asia Hospital - 3.0 Km
- Shree Hospital - 3.6 Km
- Anup Nursing Home - 4.6 Km
- Salunke Hospital - 5.0 Km
- Ruby Hall Clinic - 5.3 Km

### Schools and Colleges



- The Wonder School - 600 m
- Lonkar Madhyamik Vidyalaya - 900 m
- Lexicon Kids - 950 m
- Petals Pre-School - 1.1 Km
- St. Oscar Convent High School - 1.9 Km
- Mother Teresa School & Junior College - 2.8 Km
- Orchids International School - 3.0 Km
- Sadhna Ladies College - 4.6 Km
- Bishop's School - 5.1 Km
- St. Joseph's Convent School - 12.8 Km